

AVerTV Hybrid Volar HX

Quick Installation Guide

English • Deutsch • Français • Italiano

Package Contents

A



(for UK area)



(for the other areas)

B



Installation Guide
Schnellinstallationsanleitung
Guide d'installation rapide
Guida di Installazione Rapida

C



Installation CD
Installations-CD
Cédérom d'installation
CD di installazione

D



S-Video/ Composite 2-in-1 Cable
S-Video / Composite 2-in-1 Kabel
Câble 2-en-1 S-Vidéo/ Composite
Cavo S-Video/ Composito 2 in 1

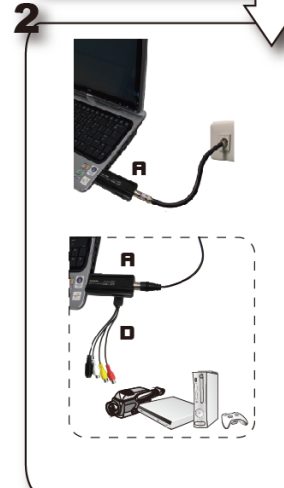
Installation Overview

English

Step 1



Turn on your PC and insert the Installation CD (**C**) into the CD-ROM. Click **Run Autorun.exe**. When menu appears, click **Install Driver**. Follow the on-screen instructions to complete the driver installation.



Step 2

Insert *AVerTV Hybrid Volar HX* (**A**) into a USB port on your PC. Then connect *AVerTV Hybrid Volar HX* (**A**) to your television aerial cable.

You can also use the S-Video/ Composite 2-in-1 Cable (**D**) to connect your *AVerTV Hybrid Volar HX* (**A**) with other consoles.



Step 3

Open Windows Media Center and configure the TV tuner. Windows Media Center is included in Windows XP Media Center Edition 2005, Windows Vista Home Premium, Windows Vista Ultimate and Windows 7 Home Premium, Professional, Enterprise and Ultimate.

Resources and Support For more information, please visit the following related sites:

AVerMedia's website: www.avermedia.com/averty

Freeview's website: <http://www.freeview.co.uk>

Windows Media Center's website:

<http://www.microsoft.com/windowsxp/mediacenter/using/default.aspx> (Windows XP Media Center Edition 2005)

<http://www.microsoft.com/windows/windows-media-center/default.aspx> (Windows Vista Media Center Edition)

<http://windows.microsoft.com/en-us/windows7/Getting-started-with-Windows-Media-Center> (Windows 7 Media Center Edition)



Step 1

Schalten Sie den PC ein und legen die Installations-CD (C) in das CD-Rom. Starten Sie die **Autorun.exe**. Wenn das Installations-Menü erscheint wählen Sie „**Install Driver**“ aus. Folgen Sie den Informationen für die Treiber-Installation die Ihnen gezeigt werden.

Step 2

Stecken Sie den *AVerTV Hybrid Volar HX (A)* an den USB-Port des PC.

Verbinden Sie den *AVerTV Hybrid Volar HX (A)* mit der Antenne. Sie können das S-Video/ Composite 2-in-1 Kabel (D) mit dem *AVerTV Hybrid Volar HX (A)* verbinden um zusätzlich analoge Geräte anzuschließen.

Step 3

Starten Sie den Windows Media Center und stellen Sie dort den TV-Tuner ein. Windows Media Center ist enthalten in Windows XP Media Center Edition 2005, Windows Vista Home Premium, Windows Vista Ultimate und Windows 7 Home Premium, Professional, Enterprise und Ultimate.

Etape 1

Allumez votre PC et insérez le CD d'installation (C) dans votre lecteur de CD-ROM. Cliquez sur **Run Autorun.exe**. Lorsque le menu apparaît, cliquez sur **Installer le pilote**. Suivez ensuite les instructions à l'écran pour terminer l'installation du pilote.

Etape 2

Branchez *AVerTV Hybrid Volar HX (A)* sur un port USB libre de votre PC. Connectez ensuite *AVerTV Hybrid Volar HX (A)* à votre câble d'antenne TV. Vous pouvez aussi utiliser le câble 2-en-1 S-Video/ Composite (D) pour connecter votre *AVerTV Hybrid Volar HX (A)* à d'autres appareils.

Etape 3

Ouvrez Windows Media Center et configurez le tuner TV. Windows Media Center est inclus dans Windows XP Media Center Edition 2005, Windows Vista Home Premium, Windows Vista Ultimate et Windows 7 Home Premium, professionnel, entreprise, et Ultimate.

Punto 1

Accendere il PC e inserire il CD di installazione (C) nel lettore CD-ROM. Click **Run Autorun.exe**. Quando compare il menù, click **Install Driver**. Seguire sullo schermo le istruzioni per completare l'installazione del driver.

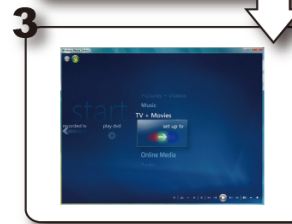
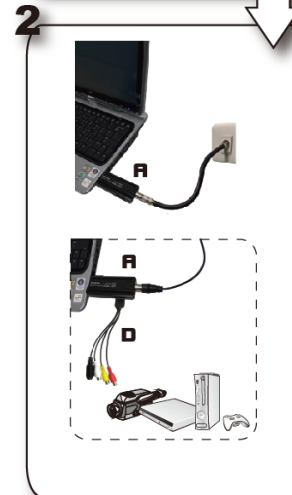
Punto 2

Inserite *AVerTV Hybrid Volar HX (A)* in una porta USB del PC. Quindi connettete *AVerTV Hybrid Volar HX (A)* con il cavo dell'antenna TV.

È inoltre possibile utilizzare il cavo S-video/composite 2-in-1 (D) collegando la vostra *AVerTV Hybrid Volar HX (A)* con altre consolle.

Punto 3

Aprire Windows Media Center e configurare il sintonizzatore TV. . Windows Media Center è incluso in Windows XP Media Center Edition 2005, Windows Vista Home Premium, Windows Vista Ultimate e Windows 7 Home Premium, Professional, Enterprise e Ultimate.



European Community Compliance Statement



Class B

This product is herewith confirmed to comply with the requirements set out in the Council Directives on the Approximation of the laws of the Member States relating to Electromagnetic Compatibility Directive 2004/108/EC. Safety Directive 2006/95/EC.

DISCLAIMER

No warranty or representation, either expressed or implied, is made with respect to the contents of this documentation, its quality, performance, merchantability, or fitness for a particular purpose. Information presented in this documentation has been carefully checked for reliability; however, no responsibility is assumed for inaccuracies. The information contained in this documentation is subject to change without notice.

In no event will AVerMedia be liable for direct, indirect, special, incidental, or consequential damages arising out of the use or inability to use this product or documentation, even if advised of the possibility of such damages.

TRADEMARKS

AVerMedia is registered trademarks of AVerMedia TECHNOLOGIES, Inc. IBM PC is a registered trademark of International Business Machines Corporation. Macintosh is a registered trademark of Apple Computer, Inc. Microsoft is a registered trademark and Windows is a trademark of Microsoft Corporation. DVB is a registered trademark of the DVB Project. All other products or corporate names mentioned in this documentation are for identification and explanation purposes only, and may be trademarks or registered trademarks of their respective owners.

COPYRIGHT

© 2009 by AVerMedia TECHNOLOGIES, Inc. All rights reserved. No part of this publication may be reproduced, transmitted, transcribed, stored in a retrieval system, or translated into any language in any form by any means without the written permission of AVerMedia TECHNOLOGIES, Inc.



The mark of Crossed-out wheeled bin indicates that this product must not be disposed of with your other household waste. Instead, you need to dispose of the waste equipment by handing it over to a designated collection point for the recycling of waste electrical and electronic equipment. For more information about where to drop off your waste equipment for recycling, please contact your household waste disposal service or the shop where you purchased the product.



IMPORTANT SAFETY INSTRUCTIONS

- Read Instructions - Read all the safety and operating instructions before connecting and operating your TV tuner to help ensure your own personal safety and to protect your product from potential damage.
- Retain Instructions - Retain all the safety and operating instructions for future reference.
- Heed Warnings - Adhere to all warnings on the product and the operating instructions.
- Grounding - For continued protection against risk of electric shock and fire, this accessory should be installed/connected only to the products, such as a computer, equipped with a three-wire grounding plug, a plug having a third (grounding) pin. This plug will only fit into a grounding-type power outlet. This is a safety feature. If you are unable to insert the plug into the outlet, contact your electrician to replace the obsolete outlet. Do not defeat the safety purpose of the grounding-type plug.
- Lightning - For added protection and to prevent damage due to lightning and power-line surges, unplug the host system, such as a computer, from the wall power outlet and disconnect the antenna or cable system. Unplug the host system from the wall power outlet when left unattended or unused for long periods of time.
- Never insert anything metallic into the TV tuner openings. Doing so may create the danger of electric shock.
- Openings in the TV tuner cabinet are provided for ventilation. To prevent overheating, these openings should not be blocked or covered. Avoid using the TV tuner on a bed, sofa, rug, or other soft surface, as doing so may block the ventilation openings in the cabinet. If you place the TV tuner in a bookcase or an enclosed space, be sure to provide adequate ventilation and air flow.
- Power Lines - An outside antenna system should not be located in the vicinity of overhead power lines or other light or power circuits, or where it can fall into such power lines or circuits.
- Antenna Installation - When installing an outside antenna system, extreme care should be taken to prevent it from touching such power lines or circuits, as contact with them may be fatal.
- Outdoor Antenna Grounding - If an outside antenna is connected to the product, ensure that the antenna system is grounded so as to provide some protection against voltage surges and built up static charges. Article 810.21 of the National Electric Code, ANSI/NFPA No.70, provides information with regard to proper grounding of the mast and supporting structure, grounding of the lead-in wire to the antenna discharge unit, size of grounding conductors, location of antenna-discharge unit, connection of grounding electrodes, and requirements for the grounding electrode.



(for CATV system installer) This reminder is provided to call the CATV systems installer's attention to Section 820.93 of the National Electric Code, ANSI/NFPA 70:2005 (for US/Canada) and/or EN60728-11:2005 standard (for Europe), which provide guidelines for proper grounding and, in particular, specify that the coaxial cable shield shall be connected to the grounding system of the building, as close to the point of cable entry as practical.