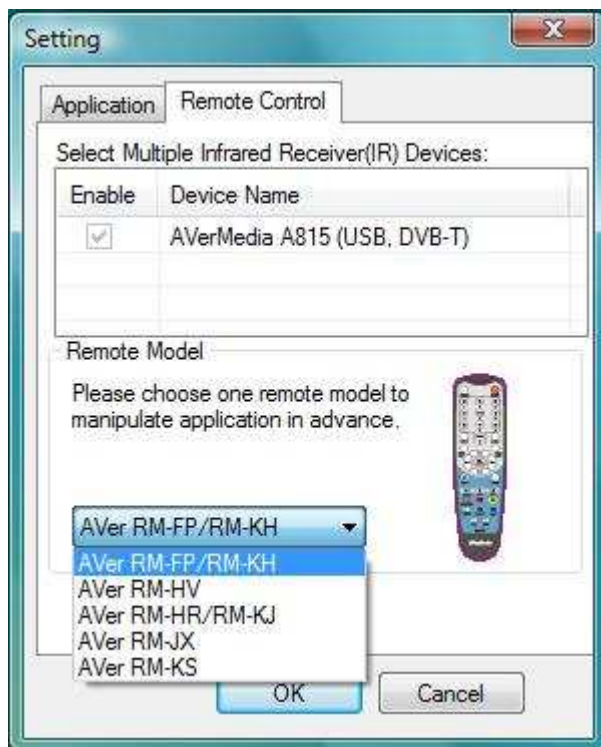


How to setup the appropriate remote for A815?

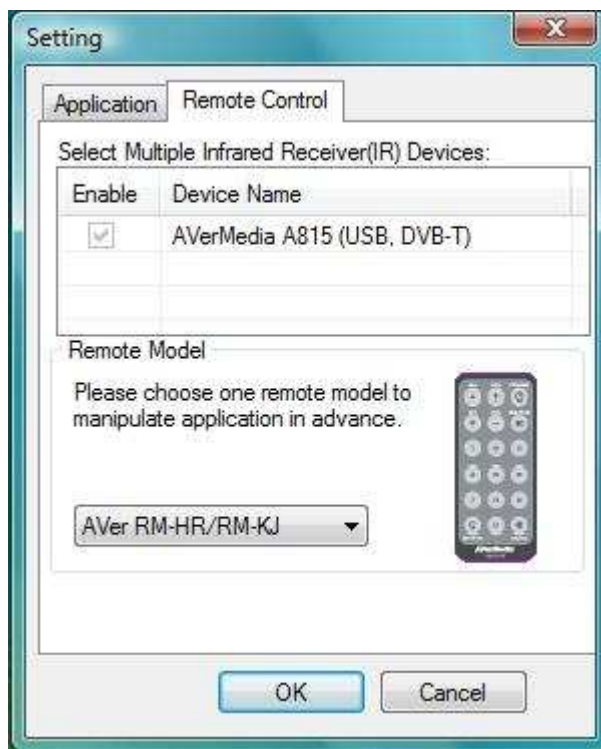
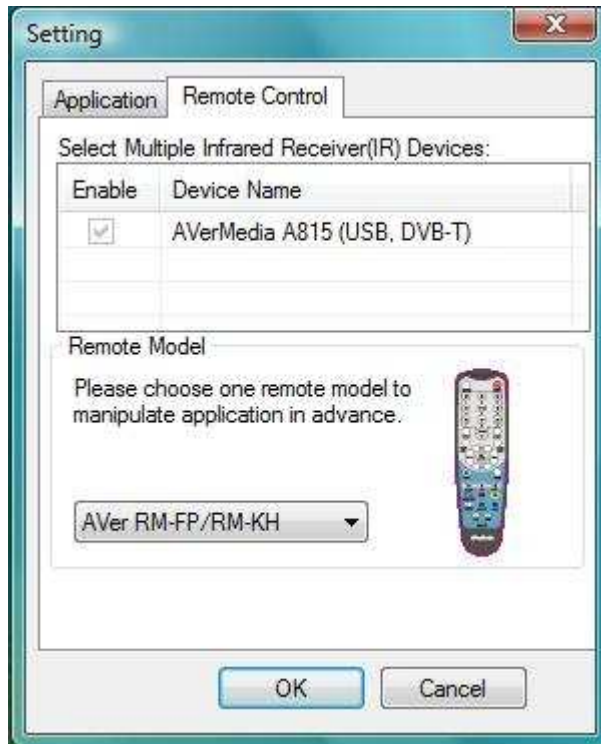
1. After installing the AVerTV application, right click on the AVerQuick icon located in the bottom right corner of the taskbar.



2. When the setting window pops out, choose on remote and click on the side bar to choose the corresponding remote



3. If your remote is the RM-KH or RM-KJ, click on either one and click on ok



4. For RM-KS, choose the following

